

Thyroid Disease

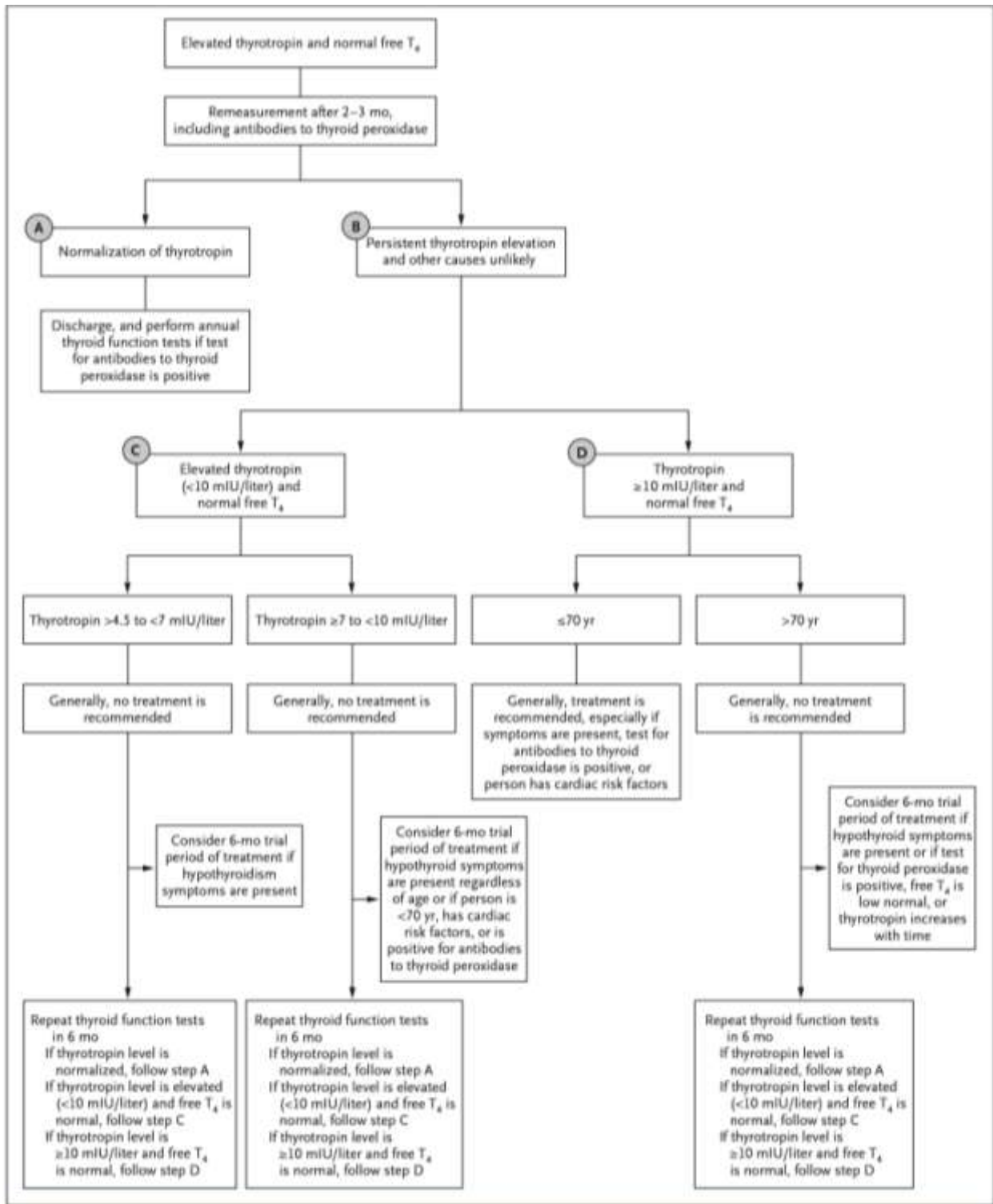


Figure 1. Treatment Algorithm for Subclinical Hypothyroidism.

This algorithm does not apply to pregnant women or to young women who may potentially seek pregnancy and is based on current U.S. and European guidelines.^{26,27} However, the U.S. guidelines do not make an explicit distinction according to age, and neither guideline specifies differential management according to the degree of thyrotropin elevation below 10 mIU per liter.

There are special considerations from pregnancy, both testing and replacement.

From New England Journal of Medicine, Robin P. Peeters, M.D., Ph.D, Subclinical Hypothyroidism, Volume No. 376, Page No. 2561. Copyright © 2017 Massachusetts Medical Society. Reprinted with permission from Massachusetts Medical Society.

Guidelines are intended to be flexible. They serve as reference points or recommendations, not rigid criteria. Guidelines should be followed in most cases, but there is an understanding that, depending on the patient, the setting, the circumstances, or other factors, care can and should be tailored to fit individual needs.